

MONTHLY MEMBERSHIP PROGRESS REPORT

LOCATION HUNGARY

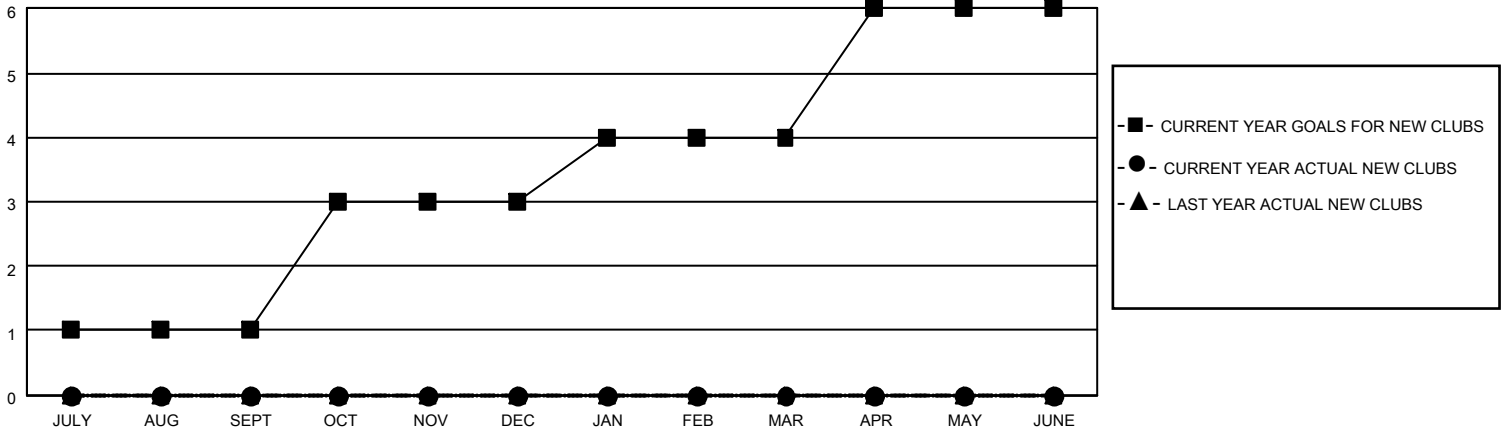
District 119

Results as of: 4/30/2023

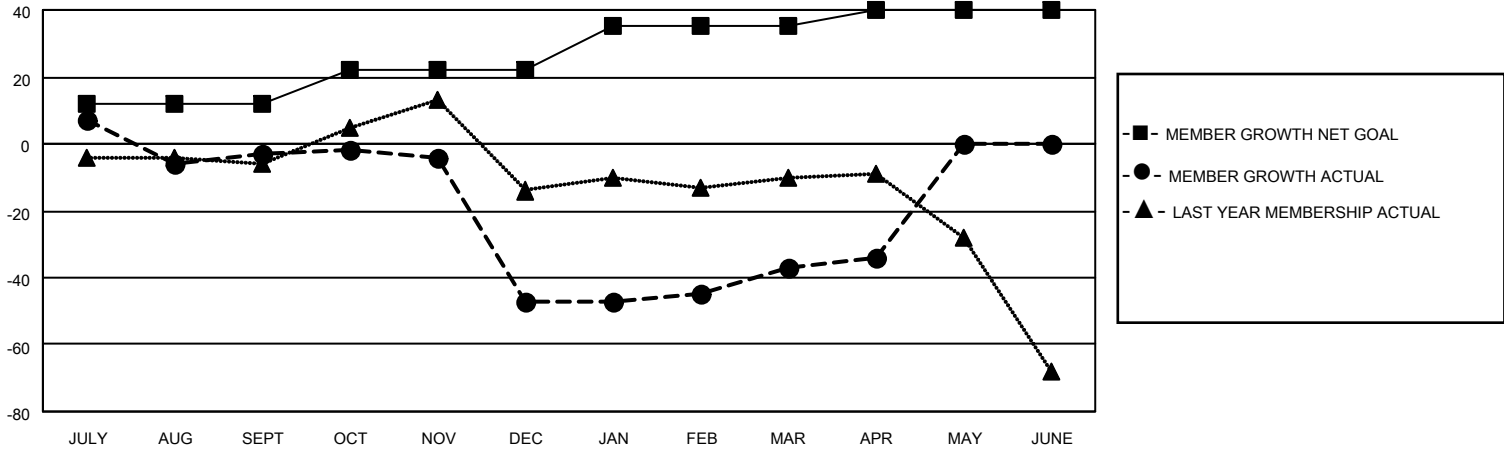
Clubs			
RESULTS FOR 2022-2023			
QUARTER	NEW CLUB GOAL	NEW CLUBS	DROPPED CLUBS
JULY/AUG/SEPT	1	0	2
OCT/NOV/DEC	2	0	2
JAN/FEB/MAR	1	0	0
APR/MAY/JUNE	2	0	0

Members			
RESULTS FOR 2022-2023			
QUARTER	MEMBER GROWTH NET GOAL	MEMBER GROWTH ACTUAL	DROPPED MEMBERS ACTUAL (including transfers)
JULY/AUG/SEPT	12	43	23
OCT/NOV/DEC	10	11	53
JAN/FEB/MAR	13	20	9
APR/MAY/JUNE	5	6	3

GOALS AND ACTUAL NEW CLUBS CUMULATIVE



GOALS AND ACTUAL MEMBERS CUMULATIVE



DROPPED CLUBS: 4	
<u>DROPPED MEMBERS</u>	
DECEASED	2
CLUB CANCELLED	26
OTHER	60
TOTAL	88

22 CLUBS OF 43 ADDED 1 OR MORE NEW MEMBERS

[CLICK HERE FOR CUMULATIVE MEMBERSHIP DATA](#)

<u>GENDER DISTRIBUTION</u>	
MALE	496 (58.15%)
FEMALE	357 (41.85%)
NON BINARY	0 (0.00%)
PREFER NOT TO ANSWER	0 (0.00%)
TOTAL FAMILY UNIT MEMBERS	156
FAMILY MEMBERS PAYING HALF DUES	79